

Manchester Carers Forum  
**Llandudno 2009**  
**Carers Break**

## Supporting Information

Manchester Carers Forum has organised a three night break for informal/unpaid carers to **Llandudno**. We will be staying at The Merrion Hotel which is situated on the promenade. We will be staying on a dinner, bed and breakfast basis. There is also entertainment at the hotel on each night of your stay.

All Unpaid Carers who live in, or care for somebody who lives in the city of Manchester are eligible to apply for a place.

As stated on the back of the application forms, **the final submission date for applications is:**

**Wednesday 8th July 2009**



**Friday 31st July to Monday  
3rd August**  
**The Merrion Hotel,  
The Promenade, Llandudno,  
North Wales, LL30 2LN**



**A FREE BREAK  
OPPORTUNITY FOR  
CARERS IN  
MANCHESTER**

Please note that application forms are for one person only. If you require additional forms do not hesitate to contact the MCF office on 0161-819-2226

# Llandudno

## Interesting Tourist Information

Llandudno is Wales's largest resort, uniquely situated between the Great and Little Ormes with two wonderful beaches, the award winning North Shore and the quiet, sand duned West Shore.

Llandudno has kept its Victorian and Edwardian elegance and splendour, despite its modern attractions.



### Skiing & Snowboarding

Enjoy relaxation and exhilaration over-looking picturesque landscapes. Skiing and snowboarding for all abilities using the latest "perma-snow" slope. Ride the cresta run, spin down the slope in sno-tubes or test your skill on the alpine golf.

Food, drinks and a welcoming atmosphere always on offer in the alpine lodge.

### The Victorian Shopping Centre

The shopping centre is an enclosed, single level centre of approx 100,000 sq foot. Major retailers currently represented include Mothercare, Dorothy Perkins, Early Learning Centre and Birthdays to name but a few.

The Victoria Shopping Centre also boasts an elegant Victorian style tea rooms, along with a number of individuals such as Peers the Jeweller and the Gift Company.



### Llandudno Cable Car

Enjoy a ride on the Llandudno Cable Car during your visit to this beautiful resort. As the cable cars glide silently from Happy Valley to the summit of the Great Orme (679ft) a magnificent panorama unfolds - breathtaking views of Llandudno, the Little Orme, Conwy Estuary and beyond.

The Llandudno Cable Car is the longest passenger cable car system in Britain.

Choose return (18 minute ride) or single from Happy Valley or the summit, where there is a cafe. Before your return journey enjoy spectacular views of Anglesey, Puffin Island and the mountains of Snowdonia. Or explore the many delightful walks over the Great Orme with its nature trails and prehistoric remains.



## The Merrion Hotel Additional Information

Discover our stunning location on the sweep of Llandudno's beautiful promenade and majestic bay. The Merrion Hotel invites you to experience exceptional hospitality and accommodation designed to create a relaxing environment where you can't help but unwind.

Sample our award-winning cuisine. Take a short stroll to the thriving shopping centre. Explore the wealth of local attractions right on our doorstep. However long your stay, there's always something to do in this striking corner of the North Wales Coast.

The Merrion Hotel has developed an enviable reputation for quality.



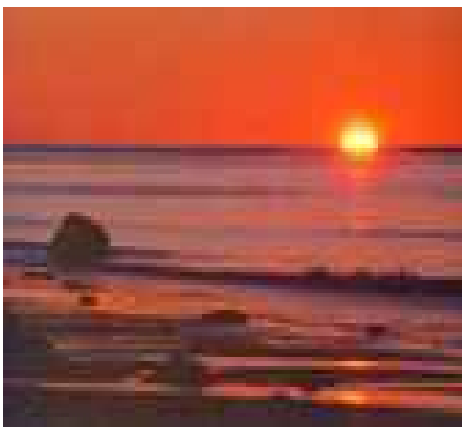
## Entertainment

In addition to the variety of attractions that Llandudno has to offer like the Promenade and Pier, The Victoria Shopping Centre, the cable cart and Llandudno Skiing and Snowboarding Centre the hotel itself has a full program of evening entertainment:

Friday 31st July - Solid Gold (Tribute to The Carpenters)

Saturday 1st August - Disco, Bingo and Quiz

Sunday 2nd August - Joe Daniels (Vocalist and Comedian)



**IF YOU HAVE ANY QUERIES OR WOULD LIKE ADDITIONAL  
INFORMATION PLEASE DO NOT HESITATE TO CONTACT NAT  
AT THE MANCHESTER CARERS FORUM OFFICE.**

**MANCHESTER CARERS FORUM  
Swan Buildings  
20 Swan Street  
Manchester  
M4 5JW**

**TEL = 0161-819-2226**

**FAX = 0161-819-2227**

**EMAIL = [nat@manchestercarersforum.org.uk](mailto:nat@manchestercarersforum.org.uk)**



**Manchester  
Carers Forum**

*'The Voice of Carers'*